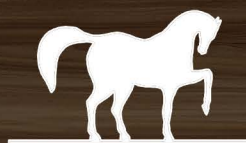


The Tri-Bay

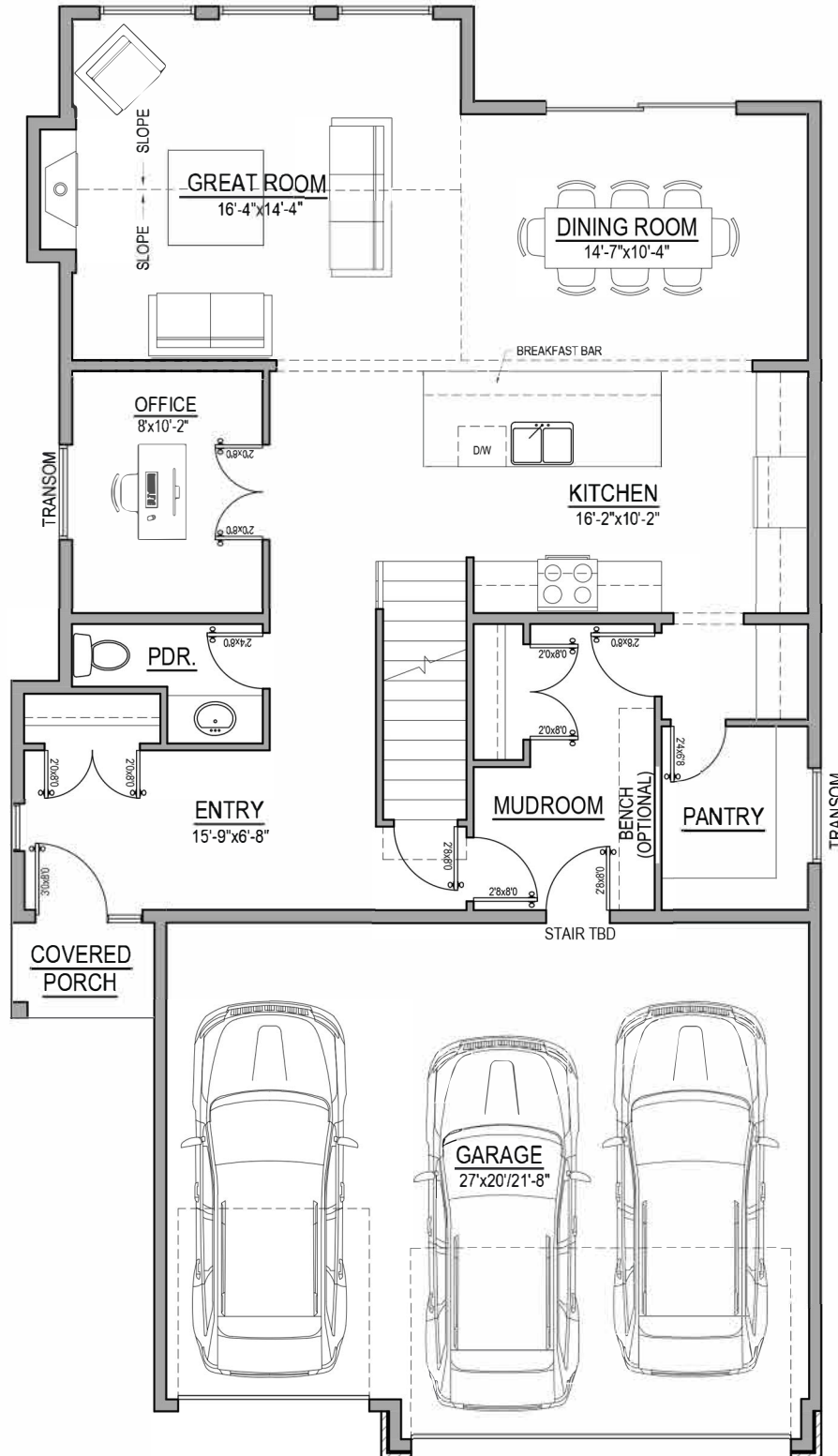
3,501 sq. ft.



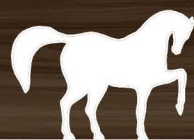
Bridlewood
HOMES

The Tri-Bay

3,501 sq. ft.



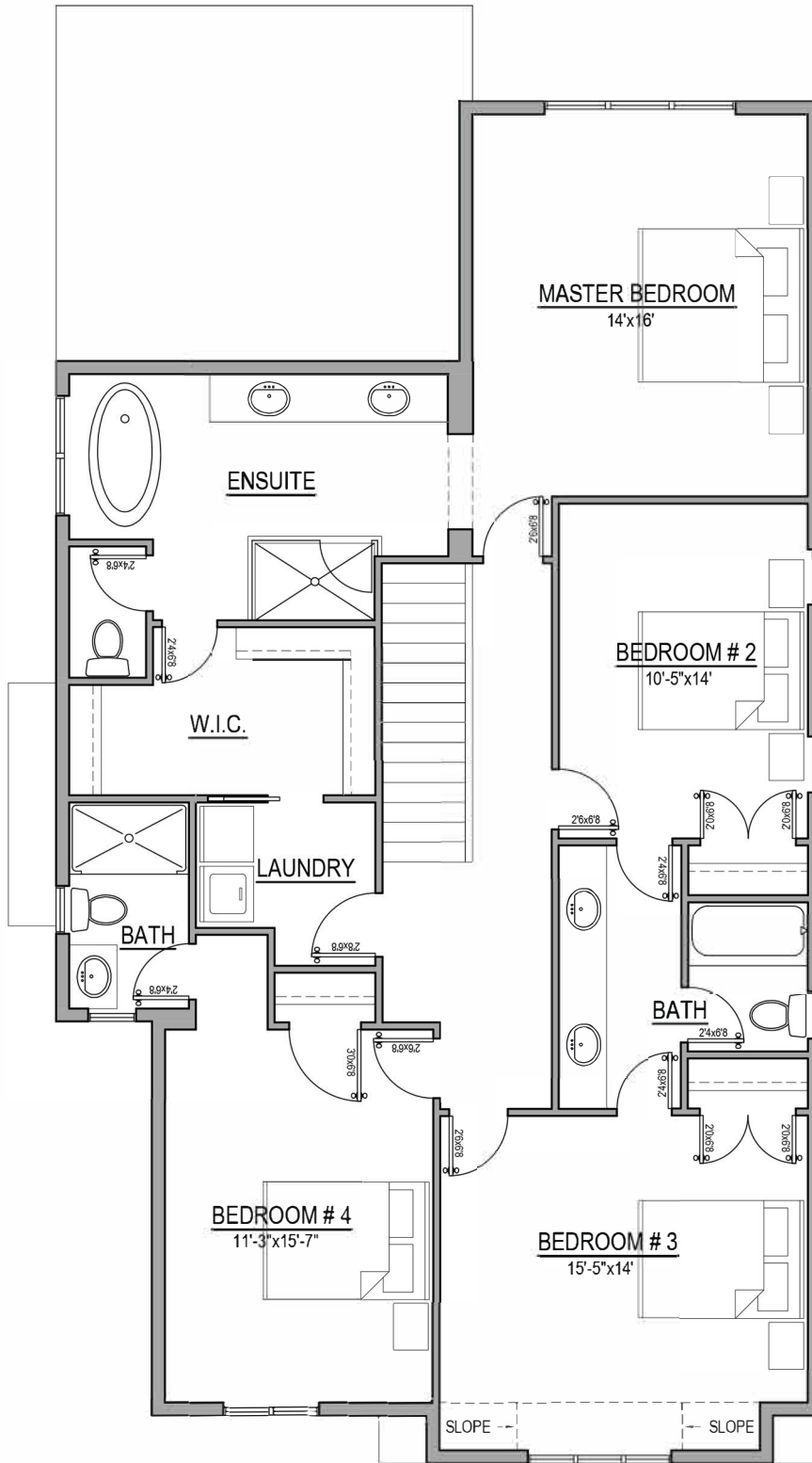
FIRST FLOOR PLAN - 1,202 SQ. FT.



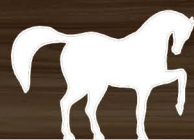
Bridlewood
HOMES

The Tri-Bay

3,501 sq. ft.



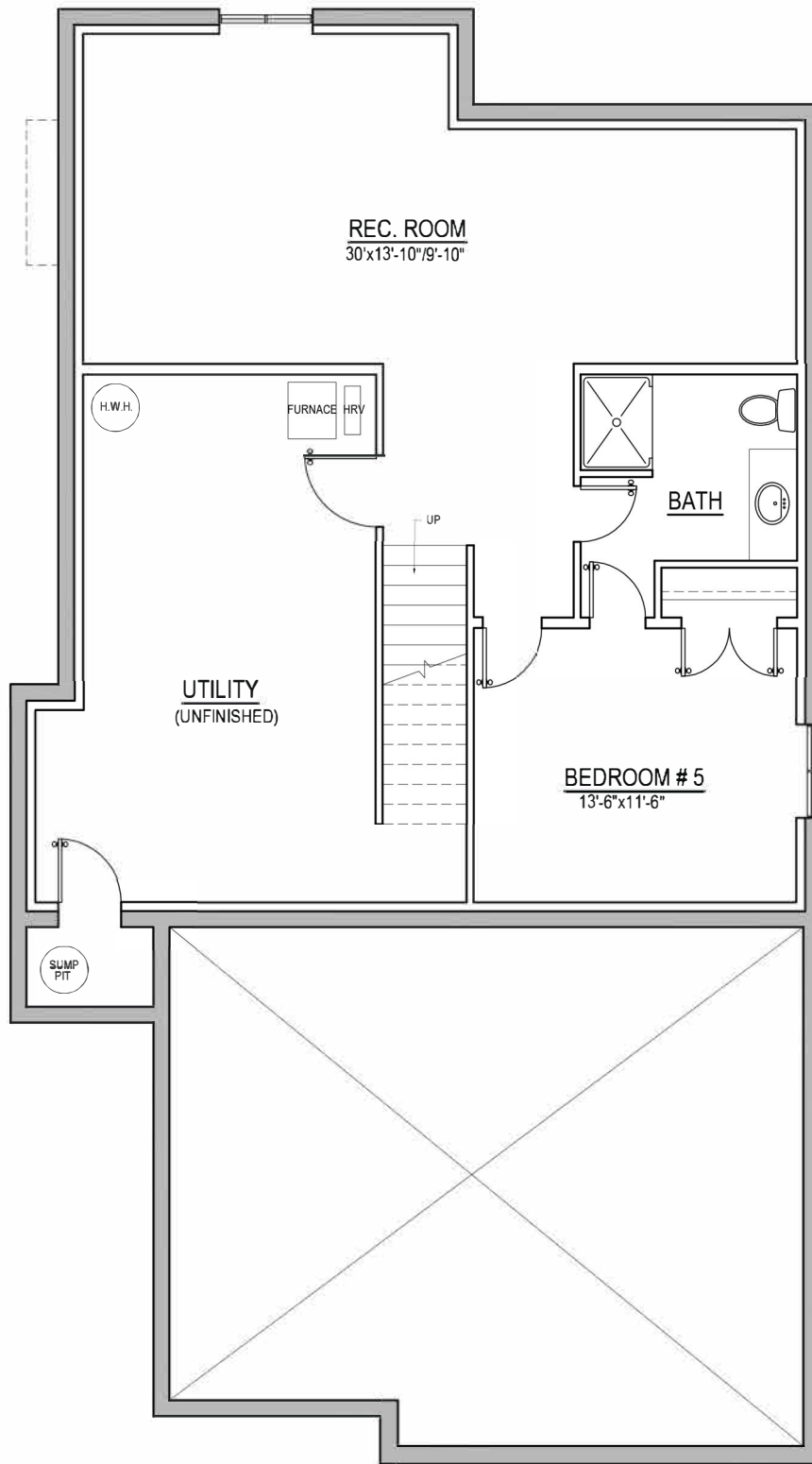
SECOND FLOOR PLAN - 1,495 SQ. FT.



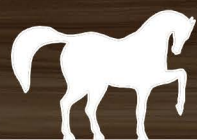
Bridlewood
HOMES

The Tri-Bay

3,501 sq. ft.



BASEMENT PLAN - 804 SQ. FT. FINISHED



Bridlewood
HOMES